

Uploading a BP Measurement Plan to the Oscar 2 Unit

STEP 5: Connecting the Unit to the Computer



Connect the cable to the Oscar 2 monitor as shown in (Fig. 4).

(Fig. 4)



Connect the PC Interface cable to the 9-pin serial port on back of the computer.

(Fig. 5)

Before you upload a BP measurement plan to the Oscar 2 Unit make sure:

- The AccuWin Pro Software is installed (refer to front of card)
- Batteries are in the unit
- The serial cable is connecting the Oscar 2 Unit to the computer

STEP 6: Creating and Uploading a BP Measurement Plan

A BP measurement plan is created in AccuWin Pro by selecting certain parameters (refer to fig. 6) for each patient and then uploading it to the Oscar 2 Unit.

1. Start AccWin Pro.
2. A prompt will appear each time you open AccuWin Pro for user's name. Type in user name. To change user go to FILE then click on Change User. This feature is available to allow each user to store his or her own configuration such as report and thresholds.
3. Next you must configure the port but only the first time you set-up the Oscar 2.
 1. Follow the instructions on the screen.

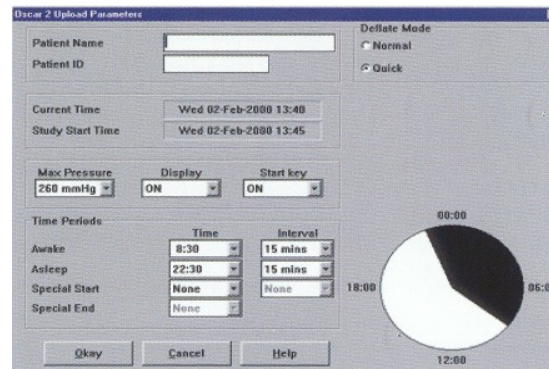
Configuring the Port

1. Select the DOWNLOAD function from the file menu then select CONFIGURE PORT.
2. Select the communications port to which the PC cable is connected.
3. Select OSCAR 2.
4. Select OK when finished.

Uploading the Data

1. Click on the UPLOAD icon.
2. Follow the pop-up menu.
3. Click on the data fields to enter data.
4. Click OKAY when data entry is complete.
5. The dialog box on screen will show the progress as the data is transferred to the unit.

Uploading a BP Measurement Plan



(Fig. 6)

In the above Oscar 2 Upload parameters menu, the test parameters will be adjustable in the following ranges:

- Patient name and ID (for reporting and referencing data)
- Max Pressure: 220 to 260mmHg
- Time Periods: Up to 3, with automatic retry function
- Display: On will allow the patient to view the results
- Time Intervals: 5, 10, 15, 30, 45, 60, and 90 minute intervals
- Deflate Mode: Normal deflate mode is approximately 3mmHg/sec. Quick deflate mode is designed to deflate at a faster than normal rate to enhance patient comfort
- 6. Click Okay when data entry is complete.
- 7. The dialog box on screen will show the progress as the data is transferred to the unit.
- 8.

Note: Once the data is uploaded to the unit the first reading will begin in 5 minutes.

Oscar 2 AccuWin Pro Functions

AccuWin Pro provides functions to download BP data from the Oscar 2, edit data, and print reports. The most frequently used functions are made available as icons at the top of the main window.

- Upload a programmed BP measurement plan to the Oscar 2
- Displays the configuration input for the study
- Download data the Oscar 2 BP monitor
- Retrieve previously downloaded data
- Exit the AccuWin Pro Program
- Print a report
- Edit the tabular data
- Displays statistics for current BP report

In addition to the toolbar buttons, a menu bar at the top of the main window gives access to other functions:

- Copying BP data to other disks or directories
- Deleting BP data
- Selecting and configuring the serial port used to download data
- Selecting and configuring the printer to use for report printouts
- Configuring the AccuWin Pro report
- Setting BP thresholds and patient's sleep times
- Uploading to the Oscar 2

Refer to the AccuWin Pro manual for more detailed information.



Medical Instruments, Inc.

The motion – tolerant BP company™



www.SUNTECHMED.com

Tel: +1.800.421.8626